

CAPLESJEFFERSON**ARCHITECTS**PC

Louis Armstrong House Museum Visitors Center



LOUIS ARMSTRONG HISTORICAL MUSEUM

New York, New York

Construction to be complete in 2012

Across the street from Louis Armstrong's home, the center invites its visitors to enjoy the rich music and many artifacts from this pivotal entertainer. The curving building, diagonally sliced within, recollects both the rough jazz and the love of lyricism that were Louis' leading achievements. Daylight cuts in and out of exhibit spaces and research rooms, culminating in the Jazz Room where live musicians will open their rehearsals to reveal the living legacy of Louis' music.

Context:

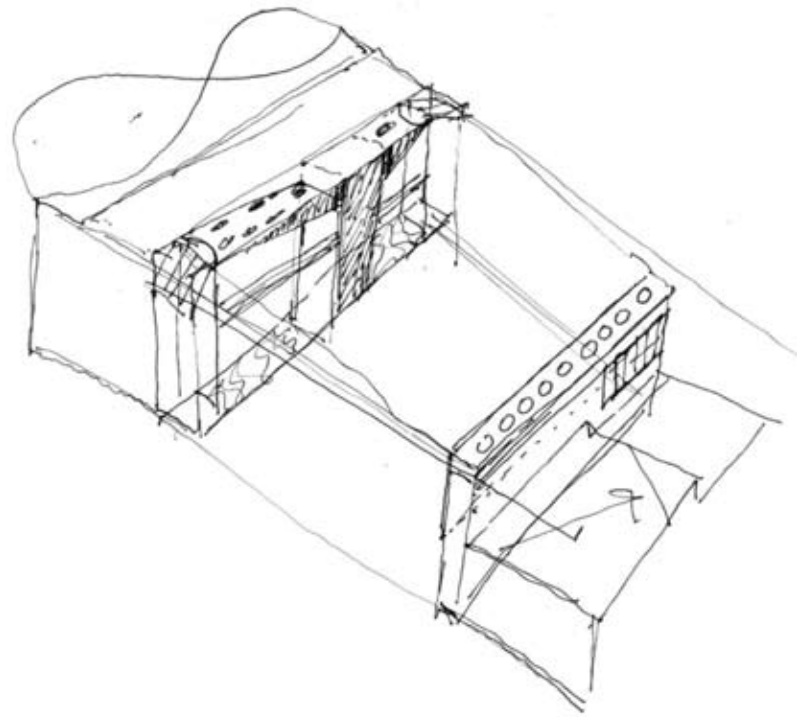
A shady side street in a blue-collar neighborhood in Queens. Across the street from the Louis Armstrong House that has already been restored and opened for visits.

Brief:

A new visitors center to extend the house visitors' appreciation of Louis Armstrong, the man and the music. Spaces include an exhibit area, a live jazz room, support, offices, and archives with thousands of objects and recordings

Response:

Respect the contextual heights of the surrounding homes. Create a soft golden glow on the street, inflecting towards and connecting with Louis' home across the street. Bring daylight into all corners of the building with 2 long light slots and a few limited clerestories. Create rooms, niches, and balconies where earthy, brassy music can be enjoyed, shared, and broadcast.



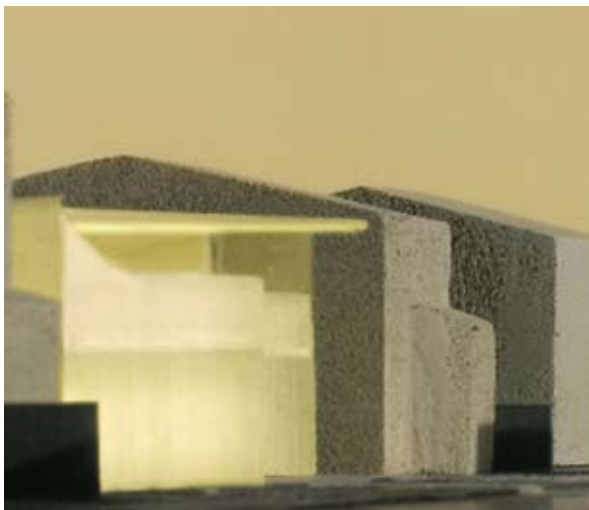
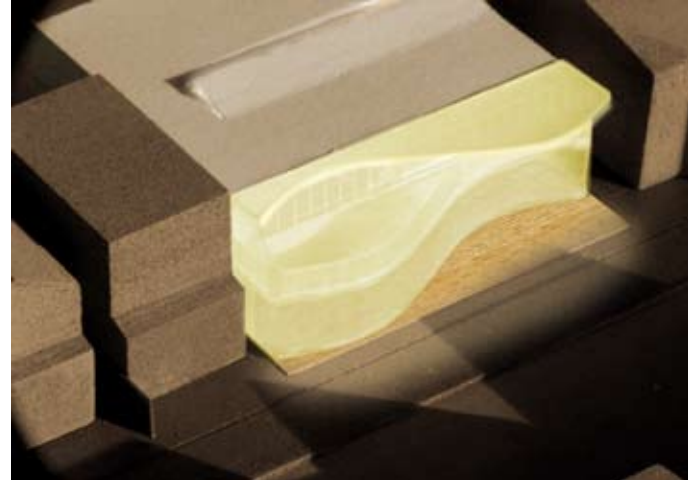
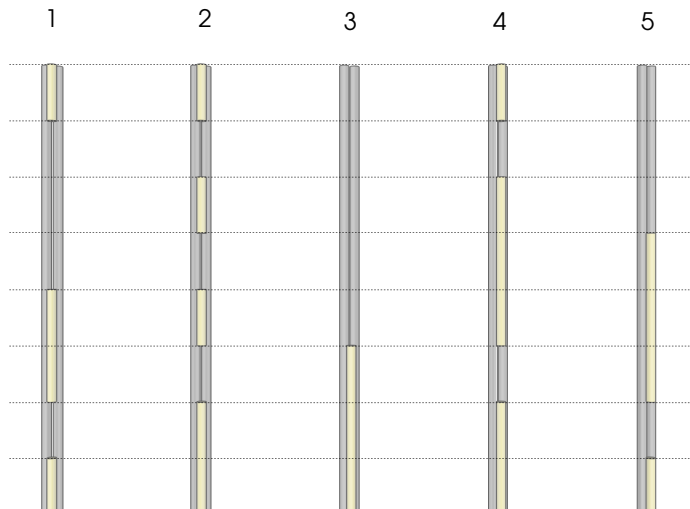
Above: Concept Sketch;
Below: Context Plan

Armstrong "Incipits"

① "What a Wonderful World"
 ② "Swingin' with Some Barbecue"
 ③ "When It's Sleepy Time Down South"
 ④ "Dinah"
 ⑤ "When the Saints..."

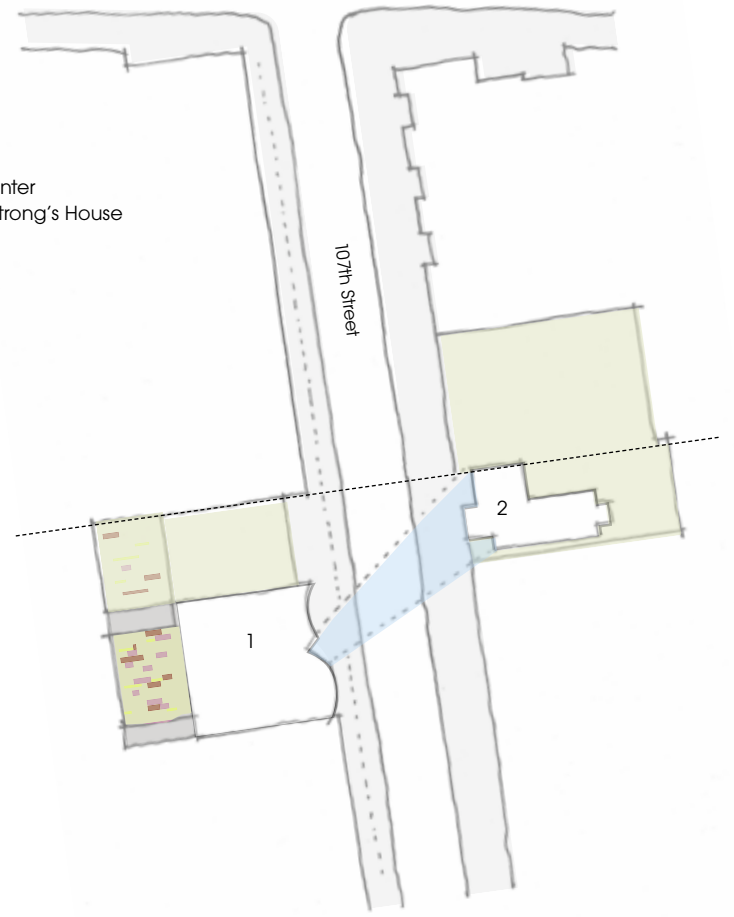
① D.C. BARBER
 ② MURRAY CLOSE
 ③ ARMSTRONG
 ④ ARMSTRONG
 ⑤ ARMSTRONG

Armstrong incipits expressed as one group of eight one octave = eight pitches

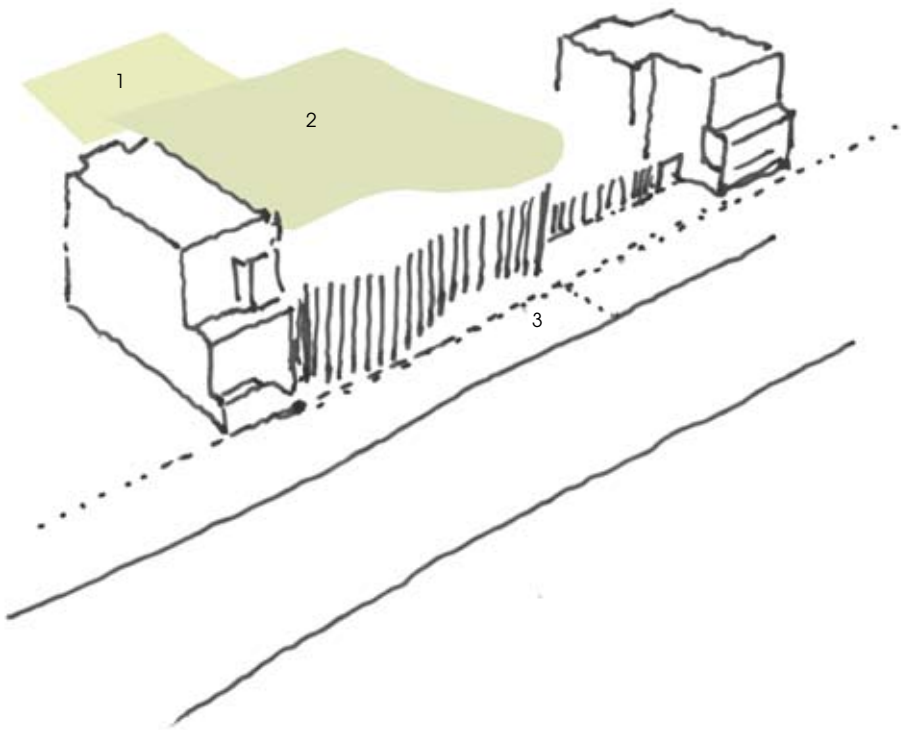


Top: Armstrong Incipits and Column Articulation
 Bottom: Model studies of street presence

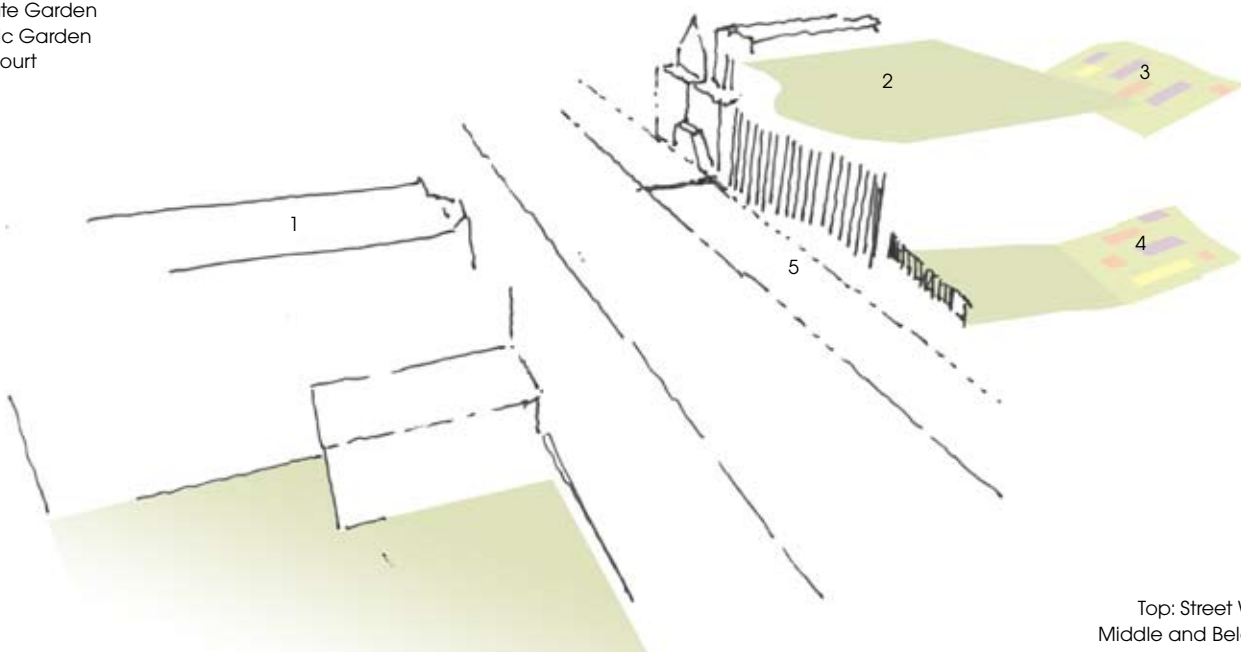
1 Visitor's Center
2 Louis Armstrong's House



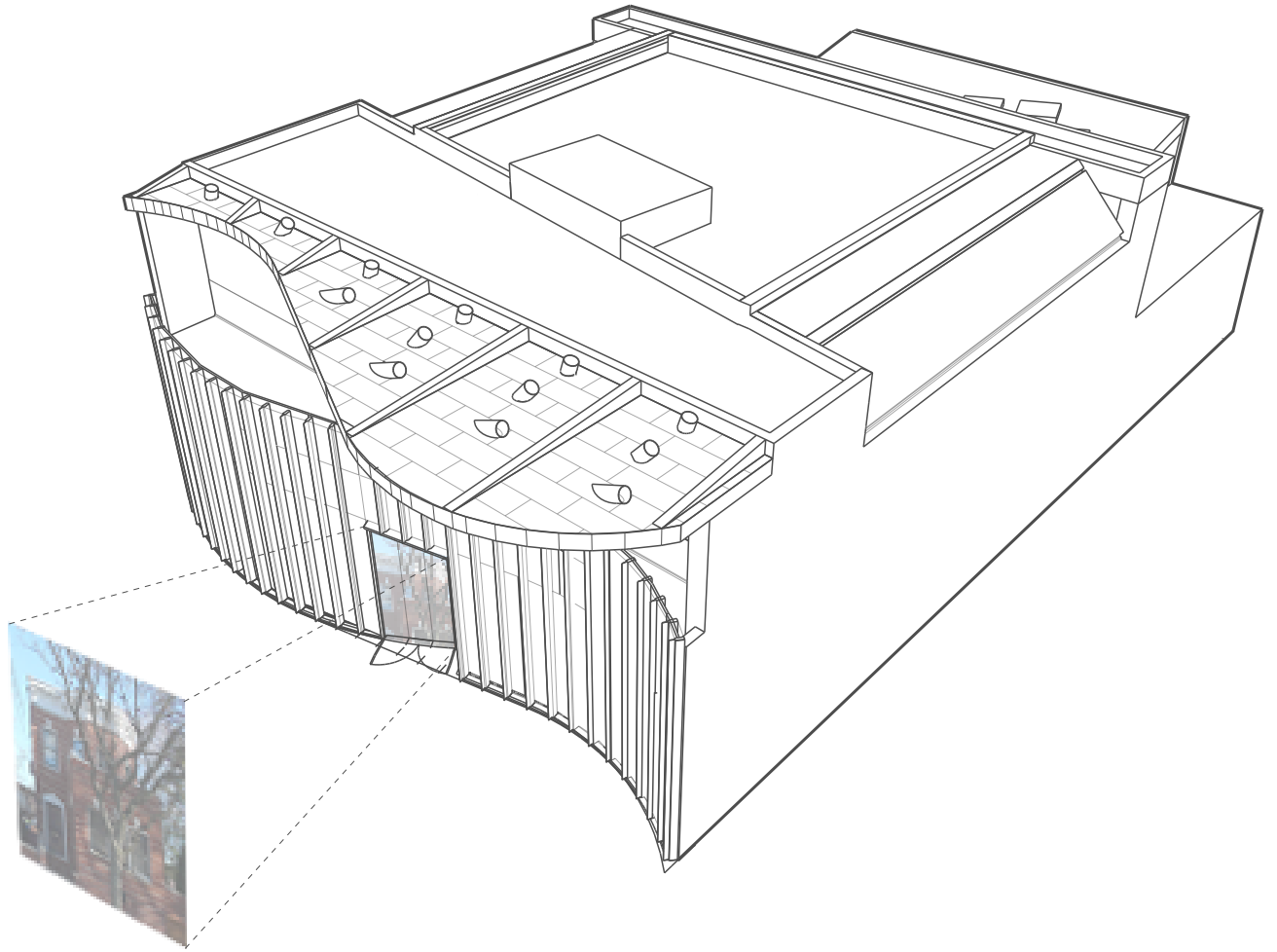
1 Sloped Private Garden
2 Green Roof
3 Urban Forecourt



1 Louis Armstrong's House
2 Green Roof
3 Sloped Private Garden
4 Sloped Public Garden
5 Urban Forecourt

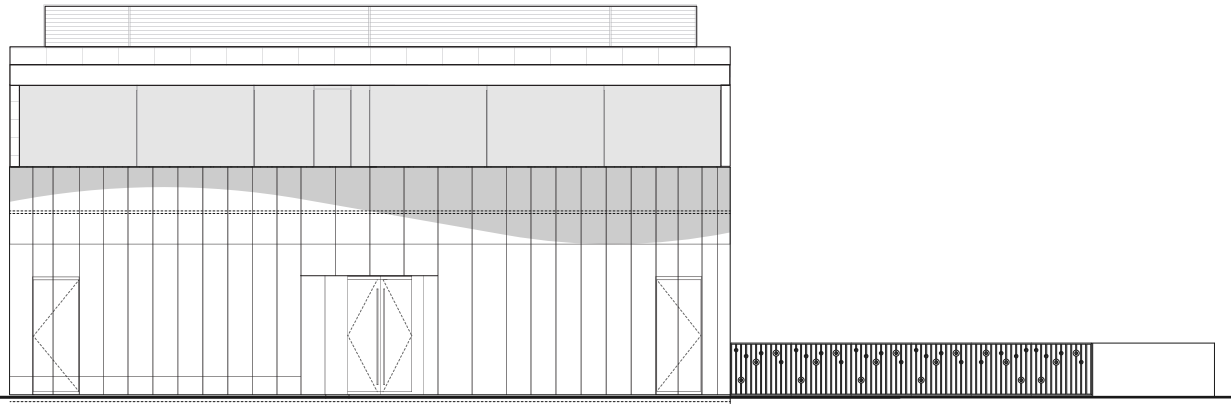


Top: Street Wall: Forecourt Outline
Middle and Below: Concept Sketches

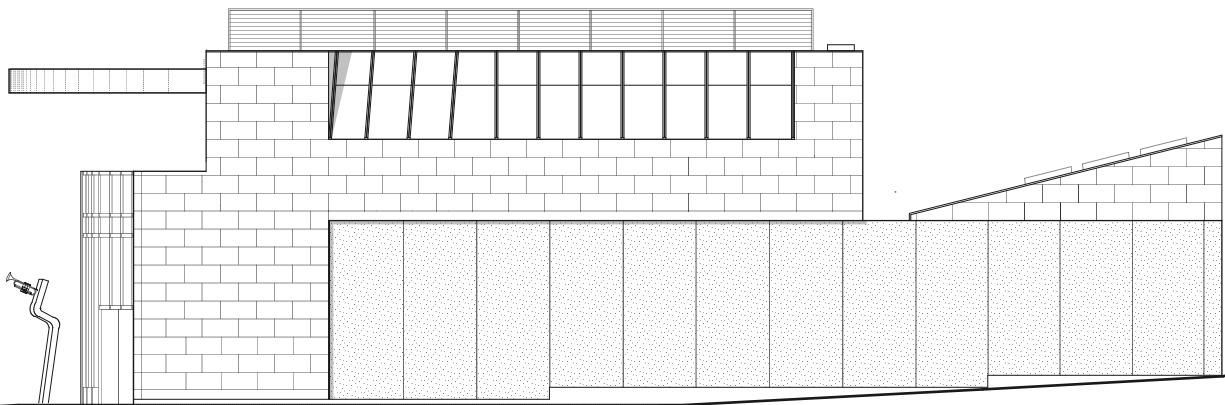


Top: Forecourt entrance facing Louis' house
Bottom: Rendering of entrance facade

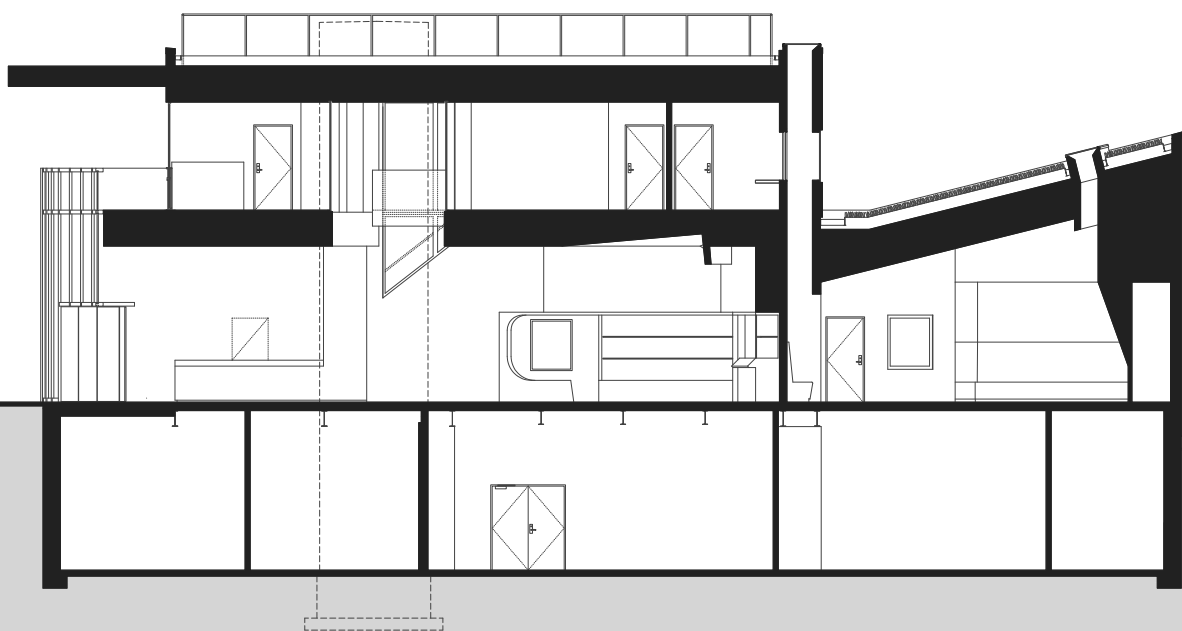




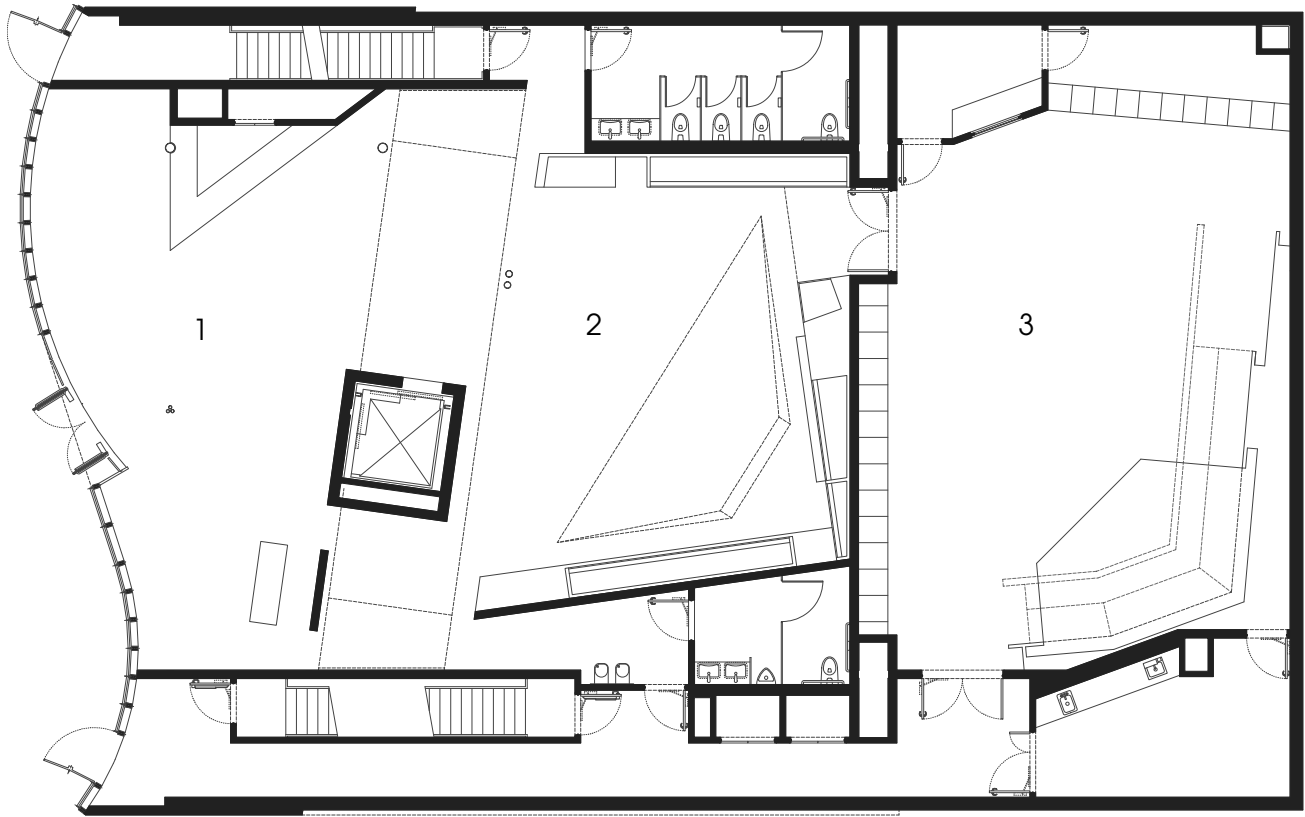
West building entrance elevation



South building side elevation

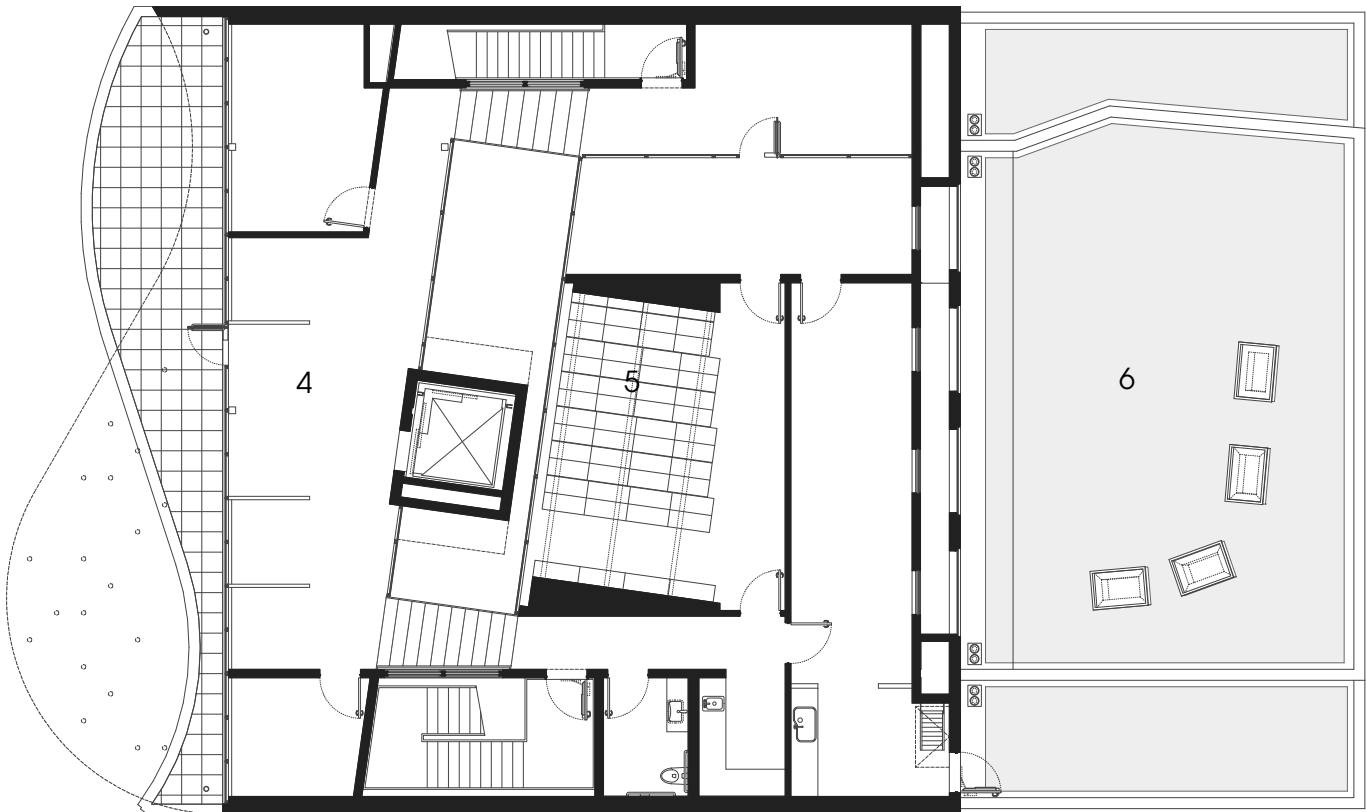


Building section



Ground floor plan

- 1 Lobby
- 2 Exhibitions
- 3 Jazz Room



Second floor plan

- 4 Office
- 5 Archives
- 6 Viewing Garden



Above left: Entrance lobby;
Below left: Exhibition space
Opposite: Jazz room









Approach from street level at dusk



CAPLESJEFFERSON **ARCHITECTS** PC | 37-18 Northern Boulevard, Suite 319 | Long Island City, NY 11101 | www.capjeff.com